



LOWER NAZARETH TOWNSHIP PLANNING & ZONING OFFICE

306 BUTZTOWN ROAD
BETHLEHEM, PA 18020
TELEPHONE: 610-759-7434
FAX: 610-746-3317

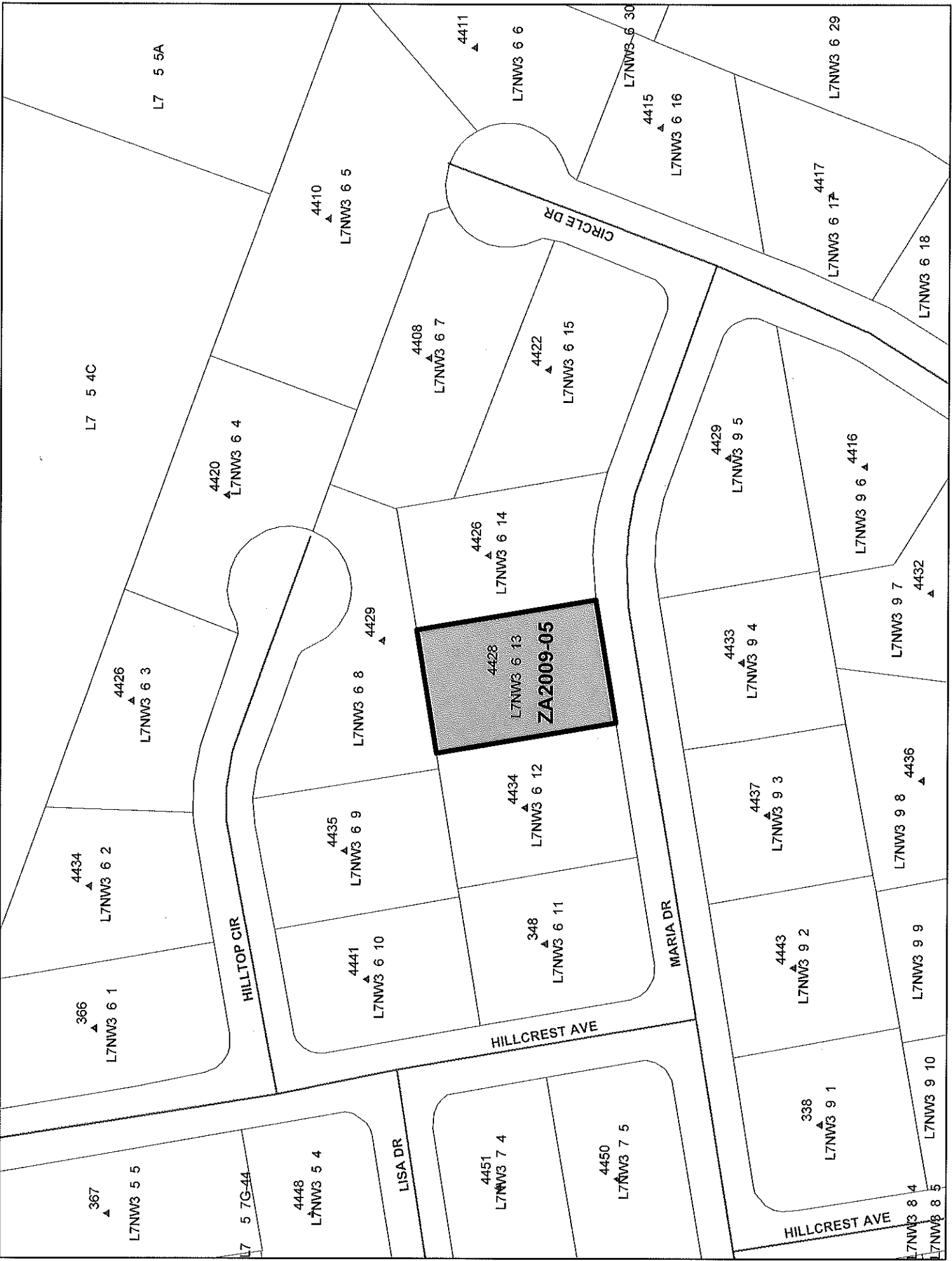
NOTICE OF ZONING HEARING MEETING

Public Notice by the Lower Nazareth Township Zoning Hearing Board is hereby given for a Zoning Hearing meeting to be held on August 25, 2009 at 7:00 p.m., in the Lower Nazareth Township Municipal Building, 306 Butztown Road, Bethlehem, PA 18020, regarding the following zoning appeal from the Lower Nazareth Township 2001 Zoning Ordinance, amended April 12, 2006:

Harry and Harriet Sigley (#ZA2009-05) – Applicant requests a variance from Article 5, Section 505(G) relative to the minimum side yard setback for a principal structure. The property location is 4428 Maria Drive, specifically Tax Map #L7NW3-6-13 and is zoned Low Density Residential (LDR).

Copies of the above-noted appeal application and supporting documents are available for public inspection at the Lower Nazareth Township Municipal Building. The Lower Nazareth Township Municipal Building is accessible to the physically challenged. **The applicants must appear at this zoning hearing.** Any party interested in the above matter has the right to appear in person, by counsel or by representative and be heard at the time and place indicated above.

Lori B. Seese
Planning & Zoning Administrator
Lower Nazareth Township



L7 5 4C

L7 5 5A

366
▲
L7NW3 6 1

4434
▲
L7NW3 6 2

4426
▲
L7NW3 6 3

4420
▲
L7NW3 6 4

4410
▲
L7NW3 6 5

4408
▲
L7NW3 6 7

4411
▲
L7NW3 6 6

4415
▲
L7NW3 6 16

4417
▲
L7NW3 6 17

L7NW3 6 18

L7NW3 6 29

4426
▲
L7NW3 6 14

4422
▲
L7NW3 6 15

4429
▲
L7NW3 6 8

4428
▲
L7NW3 6 13
ZA2009-05

4429
▲
L7NW3 9 5

4416
▲
L7NW3 9 6

4432
▲
L7NW3 9 7

4433
▲
L7NW3 9 4

4435
▲
L7NW3 6 9

4434
▲
L7NW3 6 12

4437
▲
L7NW3 9 3

4436
▲
L7NW3 9 8

HILLTOP CIR

HILLCREST AVE

MARIA DR

367
▲
L7NW3 5 5

L7 5 7G-44

4448
▲
L7NW3 5 4

LISA DR

4451
▲
L7NW3 7 4

4450
▲
L7NW3 7 5

338
▲
L7NW3 9 1

L7NW3 9 9

L7NW3 9 10

HILLCREST AVE

L7NW3 8 4
L7NW3 8 5