

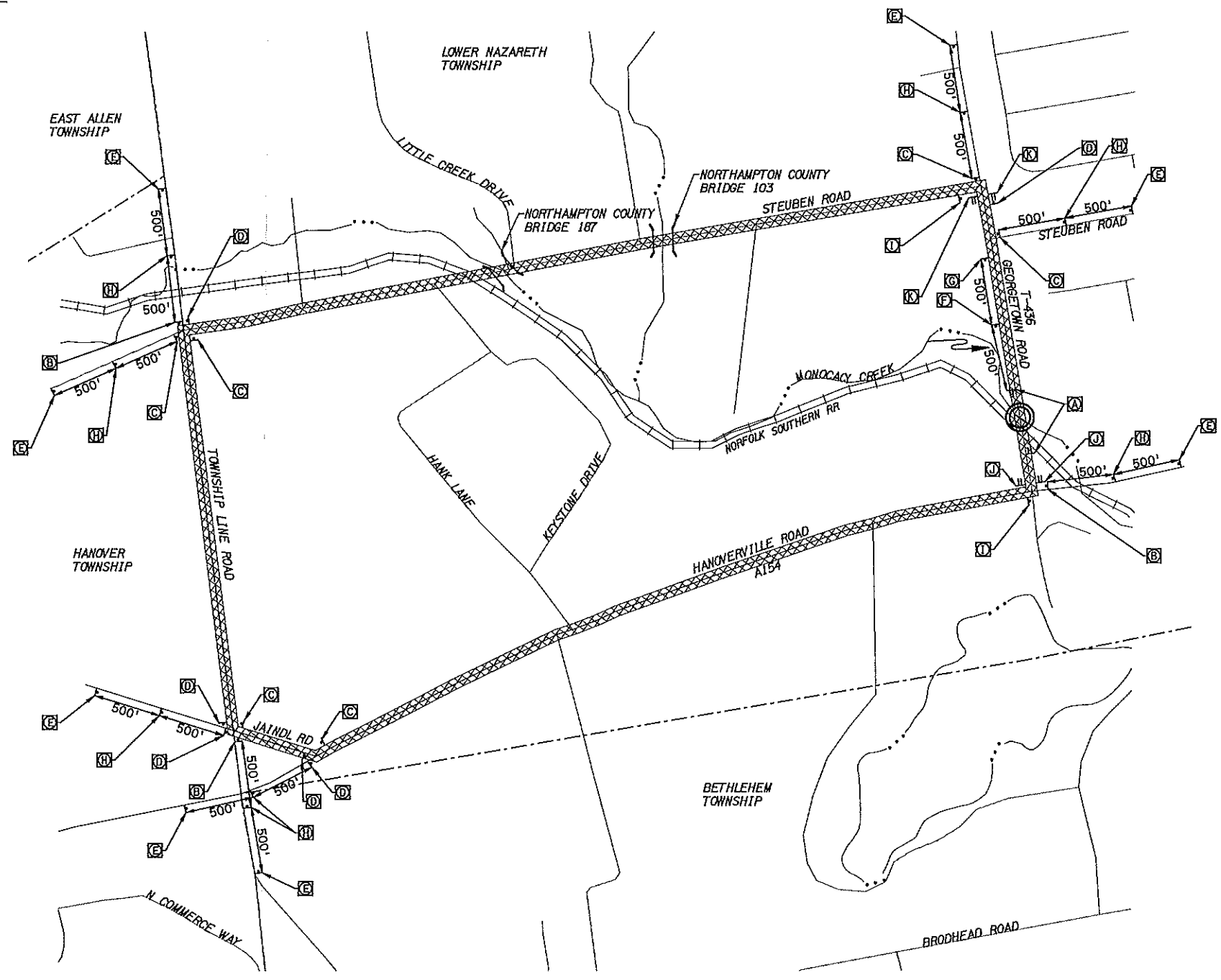
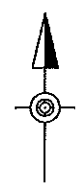
DISTRICT	COUNTY	ROUTE	SECTION	SHEET
5-0	NORTHAMPTON	T-436	BRG	2 OF 3
LOWER NAZARETH TOWNSHIP				
REVISION NUMBER	REVISIONS	DATE	BY	

SIGN LEGEND

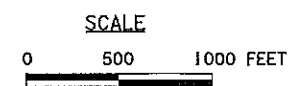
<p>A R11-2-1 48"x30" TYPE III BARRICADE BARRICADE ENTIRE ROADWAY</p> <p>B SP-1 36"x18" M4-9S 30"x24"</p> <p>C SP-1 36"x18" M4-9R 30"x24"</p> <p>D SP-1 36"x18" M4-9L 30"x24"</p> <p>E W20-3 36"x36" W30-1-1 20"x6"</p> <p>F W20-3 36"x36" W30-1-2 20"x6"</p>	<p>G SP-1 36"x18" M4-8A 24"x18"</p> <p>H R11-3B 48"x12" R11-3A 60"x30" M4-10L 48"x18" NOTE: LOCATED ON SHOULDER ON EACH SIDE OF THE ROAD</p> <p>I R11-3B 48"x12" R11-3A 60"x30" M4-10R 48"x18" NOTE: LOCATED ON SHOULDER ON EACH SIDE OF THE ROAD</p>
--	---

LEGEND

	PROJECT LOCATION		TYPE III BARRICADE
	COUNTY ROAD		TEMPORARY SIGN POST
	DETOUR ROUTE		TYPE "B" FLASHER-YELLOW
	STATE ROAD	} EXISTING BRIDGE	(DETOUR LENGTH 3.4 MILES)
	NORFOLK SOUTHERN RAIL		
	STREAM		
	TOWNSHIP LINE		



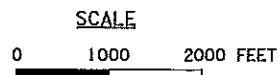
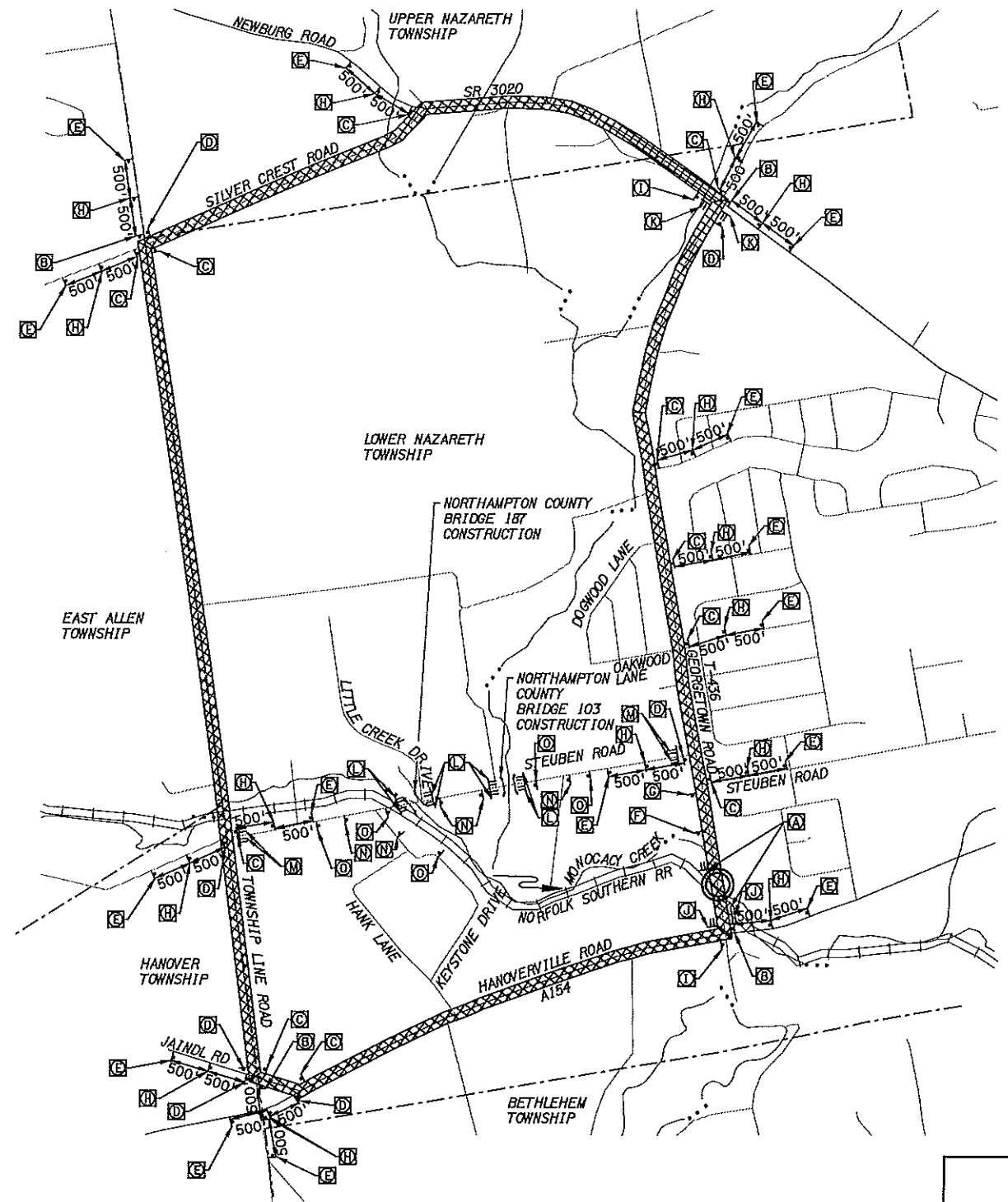
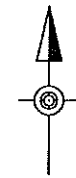
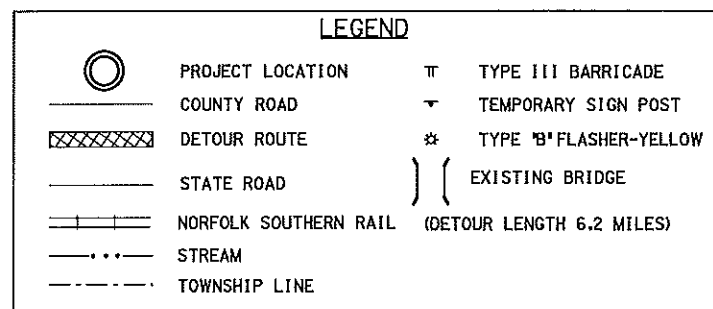
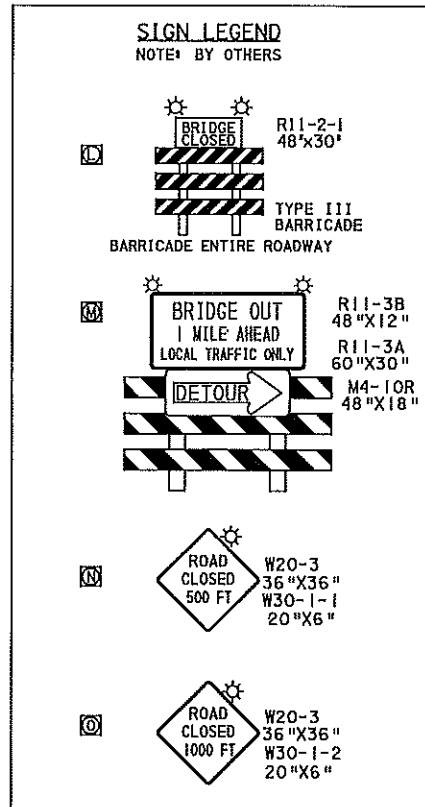
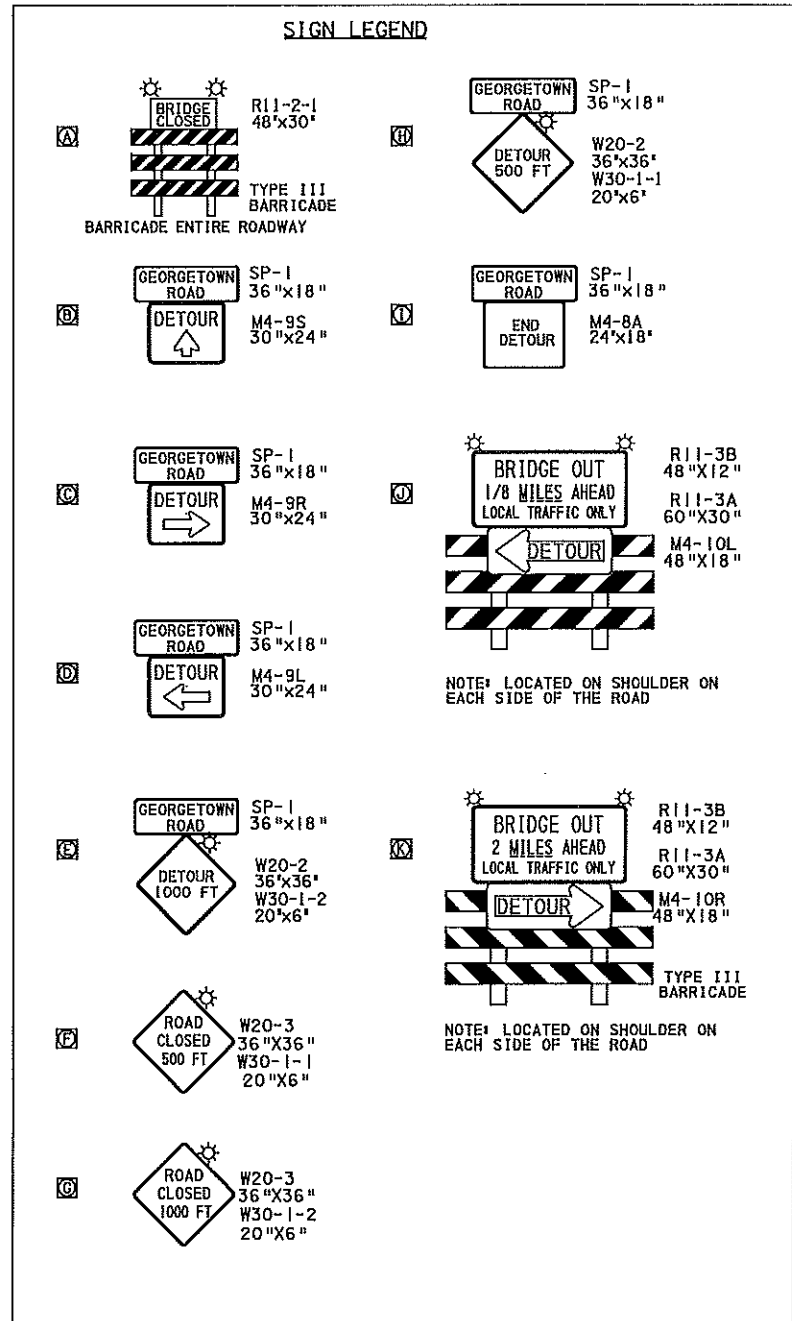
DETOUR WITH STEUBEN ROAD OPEN TO TRAFFIC



TRAFFIC CONTROL PLAN

P:\1000-0363-00\UNMS\Traffic Control Plan\4360701.dgn 1/2/2013 11:25:58 AM

DISTRICT	COUNTY	ROUTE	SECTION	SHEET
5-0	NORTHAMPTON	T-436	BRG	3 OF 3
LOWER NAZARETH TOWNSHIP				
REVISION NUMBER	REVISIONS	DATE	BY	



DETOUR WITH STEUBEN ROAD CLOSED TO TRAFFIC

TRAFFIC CONTROL PLAN



P:\1006-056-00\Drawings\Traffic Control Plan\4568702.dgn
1/28/2015 11:28:57 AM